



SAMUEL WOOD

8 The Criftins, Leintwardine, Craven Arms, Herefordshire, SY7 0NN

£550 PCM



This terraced 2 bedroom house is located in one of North Herefordshire's best and well serviced village. The property enjoys driveway parking, gardens to front and rear and accommodation benefitting from upvc double glazing and electric heating to: Kitchen, Living Room, Rear Porch, First Floor Landing, 2 Bedrooms and Bathroom. Available unfurnished £550 per calendar month. EPC Rating - E

Services:

Mains electricity, mains water, mains drainage, windows are upvc double glazed and electric heating in the property.

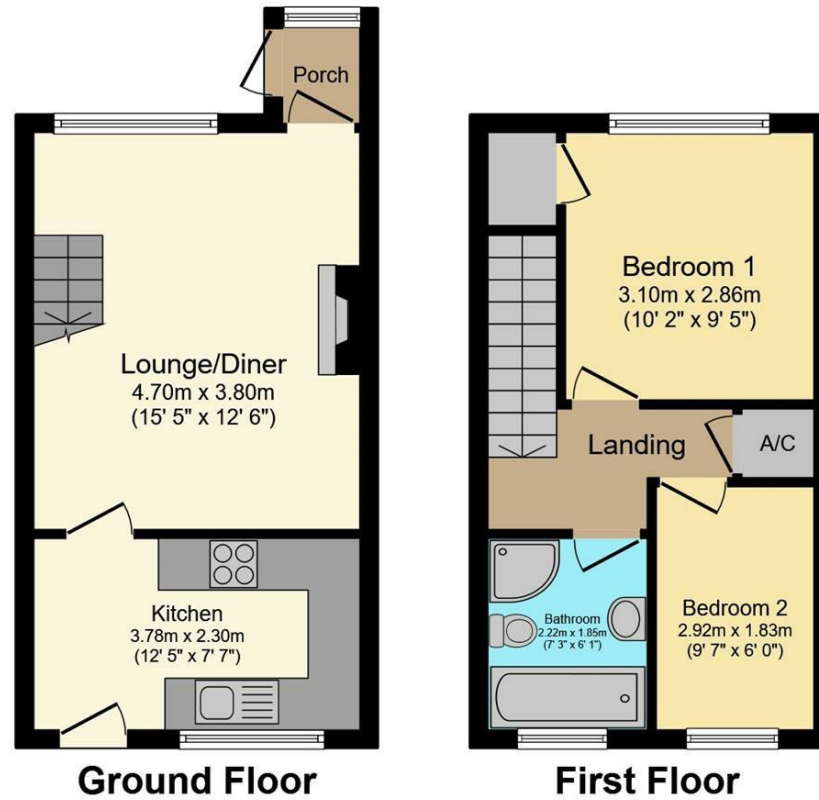
Local Authority

Shropshire Council, The Shirehall, Abbey Foregate, Shrewsbury, Shropshire SY2 6ND. Tel 0345 678 9000

Council Tax Band: B



Floor Plans



or Plan is for illustration purposes only and may not be representative of the property. The position and size of doors, windows or features are approximate. Unauthorized reproduction prohibited. © PropertyBOX

We take every care in preparing our sales details. They are checked and usually verified by the Vendor. We do not guarantee appliances, alarms, electrical fittings, plumbing, showers etc. You must satisfy yourself that they operate correctly. Room sizes are approximate; they are usually taken in metric and converted to imperial. Do not use them to buy carpets or furniture. We cannot verify the tenure, as we do not have access to the legal title; we cannot guarantee boundaries or rights of way so you must take the advice of your legal representative. No person in the employment of or representing Samuel Wood has any authority to make any representation or warranty whatever in relation to this property. If there is any point which is of particular importance to you, please contact the office and we will be pleased to check the information. Do so particularly if contemplating travelling some distance to view. Applicants are advised that the majority of our shots are taken with a wide angle lens.

CONTEMPORARY AGENCY • TRADITIONAL VALUES
2 Shoplatch, Shrewsbury, Shropshire, SY1 1HF
Tel: 01743 272710 | shrewsbury@samuelwood.co.uk